



CONTROLBRIGHT

Where DMX meets the cloud™

ControlBright is a revolutionary cloud controlled lighting platform, designed to interface with a wide array of DMX-enabled fixtures. Easily manage colors, brightness levels, schedules, and scenes through a centralized, web-based interface.

The ControlBright CBDMX Light Engine is compatible with any DMX-enabled fixture, providing full management of each fixture through a desktop, laptop, or mobile device. Completely eliminate truck rolls and expensive technician dispatching for scene and color updates.

RDM functionality provides full fixture provisioning and management.

Designed for single AND multiple locations, ControlBright scales from a few fixtures at a single location to thousands of fixtures across thousands of locations.

Features

- Works with ANY DMX fixture from ANY manufacturer
- Cloud-controlled, manage fixtures from anywhere
- 1-4 universe output
- 10/100 Ethernet, b/g/n Wi-Fi, USB for Cellular Modem
- RS232 output for integration with other systems
- RDM-enabled for remote management
- Over-the-Air firmware updates

Applications

Retail stores - Create new, visual displays to increase customer engagement.

Hotels - Showcase the lobby, conference rooms, or pool area with RGBW lighting.

Restaurants/Bars - Set ambiance and create new light scenes.

Municipal parks, monuments - Create eye catching scenes for tourists and residents

Office buildings - Modernize and update the appearance of rooftops, entrances, and the outer facade.

“The ability to control our DMX lighting across all of our locations through a single web-based interface is a game changer”

- Harold Patrick
Facilities Manager

Benefits

- Eliminate technician dispatches
- Allow non-technical users to manage
- Maintain consistency across locations
- Simple, easy-to-use web-based interface
- Cloud-enable other control systems via RS232
- Manage platform via phone, tablet, or PC



CONTROLBRIGHT



888-929-9936



controlbright.com



info@controlbright.com



5019 Airport Rd. Hermantown, MN 55811

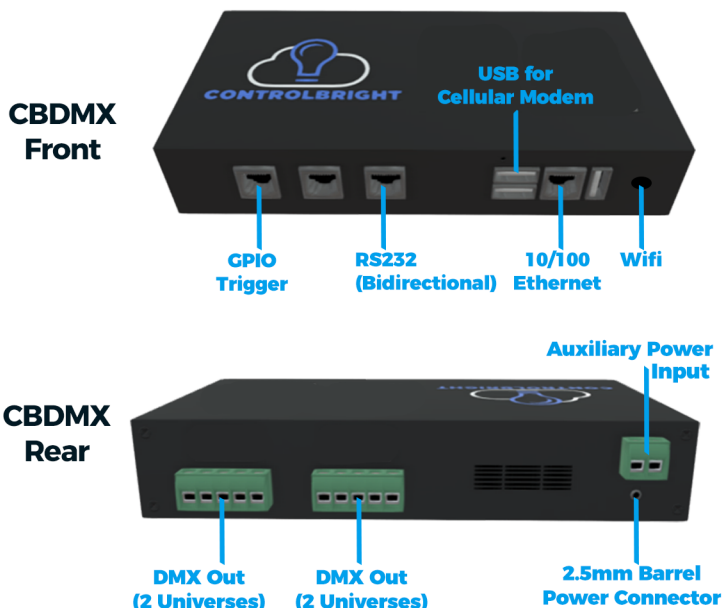
DMX Light Engine



CONTROLBRIGHT
Where DMX meets the cloud™

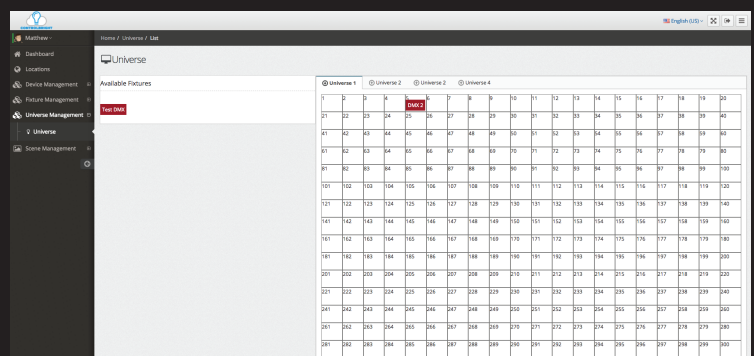
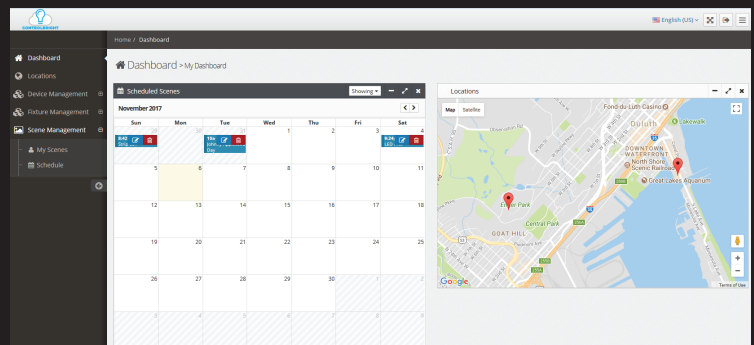
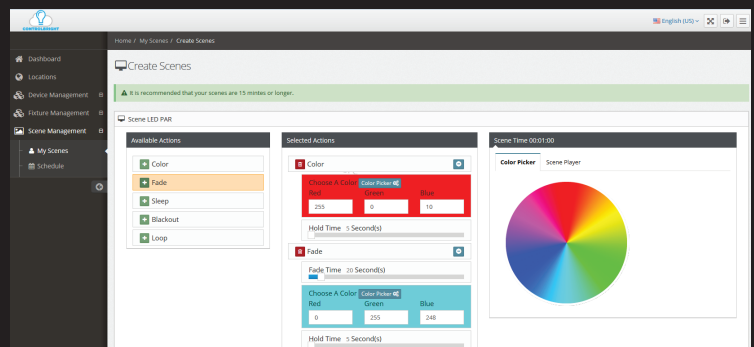
CBDMX Specifications

- Control up to four 512ch DMX universes, 2048 channels
- 12v-30v DC input via 2.5mm Barrel Connector
- Two 6-pin Phoenix connectors for DMX connection
- Bi-directional RS232 Serial interface via RJ45
- 10/100 Ethernet Port
- Wi-Fi module supporting b/g/n
- USB 2.0 for optional cellular module
- Customizable output via RJ45 (RS232, GPIO, etc)
- Supports physical pushbuttons for scene override
- Fanless, no moving parts
- 8"W x 4"D x 1.5"H



Cloud Control Panel

- **Update** colors, brightness, and scenes.
- **Create** multiple schedules for light and effects.
- **Maps integration** showing physical locations of devices, including serial number and address.
- **Manage** multiple loads and locations instantly.



CONTROLBRIGHT



888-929-9936



controlbright.com



info@controlbright.com



5019 Airport Rd. Hermantown, MN 55811

For more information please visit:
www.controlbright.com